

Alice Springs Renewables Report: 29 Sep 2025 - 28 Dec 2025

Renewables
Penetration:

20.4%

Fossil Fuels:

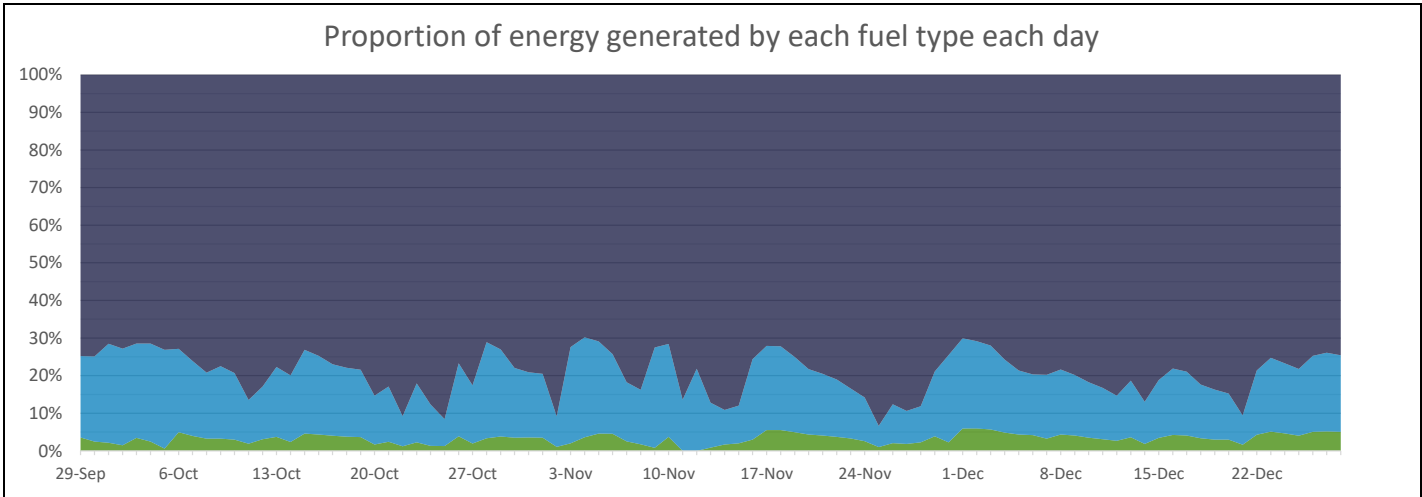
79.6%

Other Sources*:

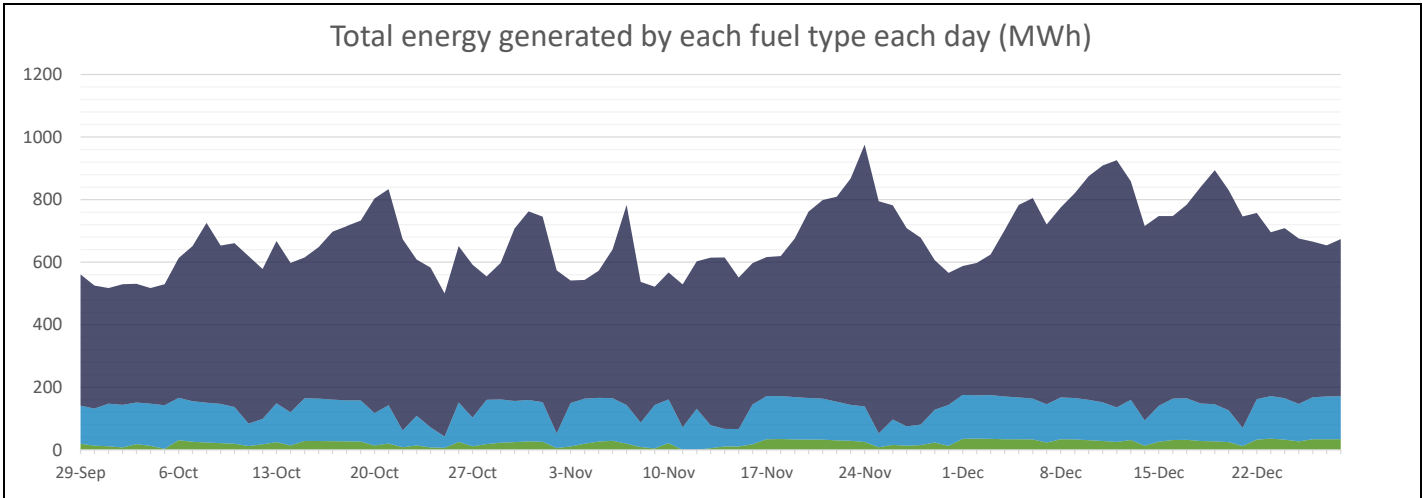
0.0%

Minimum Gross Demand:	14.3	MW @ 3:00, 29 Sep
Maximum Gross Demand:	60.8	MW @ 15:00, 24 Nov
Minimum Net Demand:	9.0	MW @ 10:00, 9 Nov
Maximum Net Demand:	48.9	MW @ 16:00, 24 Nov
Maximum Renewable Power:	21.6	MW @ 12:00, 1 Dec

Total Overall		
Fuel	MWh	Percent
Fossil	49,088	79.6%
Biomass	0	0.0%
Steam	0	0.0%
Distributed PV	10,572	17.1%
Utility Solar	2,011	3.3%



Best Hour:		
69.5%	at	11:00, 1 Dec
Fuel	MWh	Percent
Fossil	9.1	30.5%
Biomass	0.0	0.0%
Steam	0.0	0.0%
Distributed PV	17.3	57.8%
Utility Solar	3.5	11.8%



Best Week:		
27.1%	for	29 Sep - 5 Oct
Fuel	MWh	Percent
Fossil	2,705	72.9%
Biomass	0	0.0%
Steam	0	0.0%
Distributed PV	920	24.8%
Utility Solar	86	2.3%

* Landfill gas is methane sourced from the Shoal Bay waste facility that is burned to power a generator. This methane is constantly generated by the waste and would otherwise be released into the atmosphere. Therefore, utilising it in this way in fact decreases the emissions by destroying the methane and by offsetting the need for additional fossil fuel generation. (<https://www.epa.gov/lmop/benefits-landfill-gas-energy-projects>)

* Steam is created using waste heat from fossil fuel generation. The steam is then used to create low-emissions power that offsets the need for additional fossil fuel generation.

Data sources:
Fossil, Biomass, Steam, Utility Solar:
PWC PI Historian

Distributed PV:
3rd party estimated actuals

This report is for informational purposes only and is subject to the accuracy of the source data.