

DKPS Renewables Report: 29 Dec 2025 - 29 Mar 2026

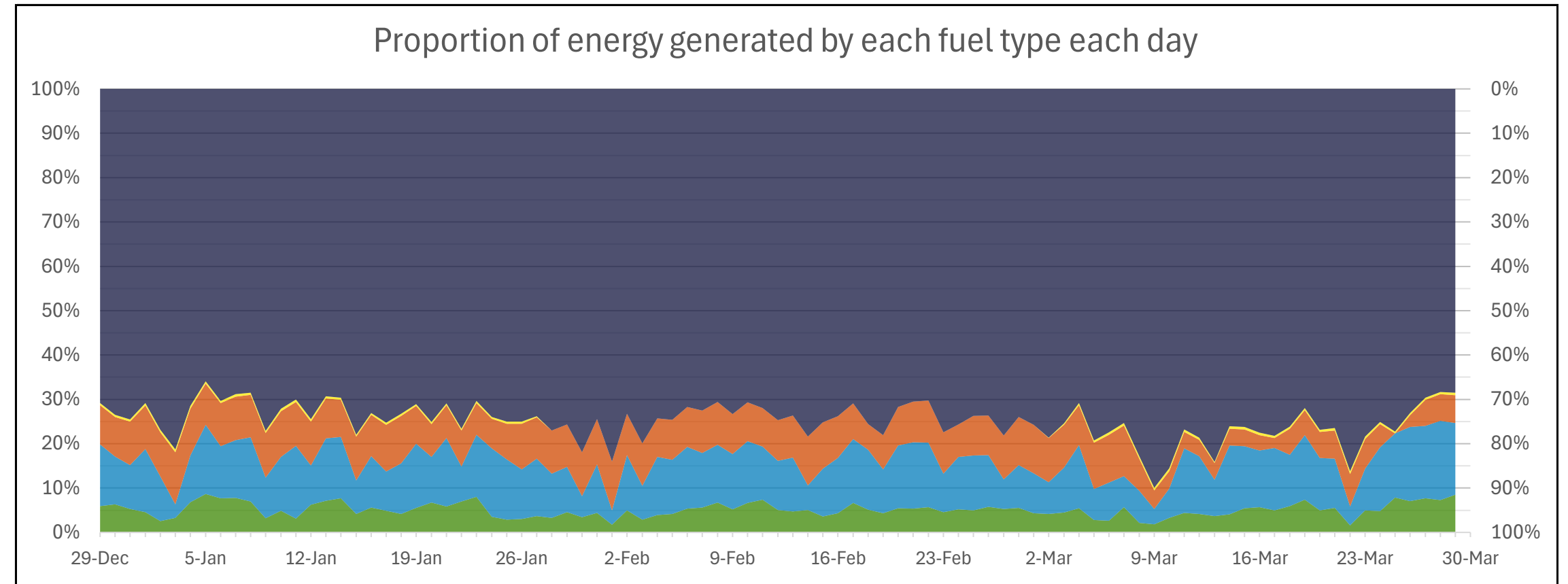
Renewable Penetration:

16.8%

Fossil Fuels: 74.7%

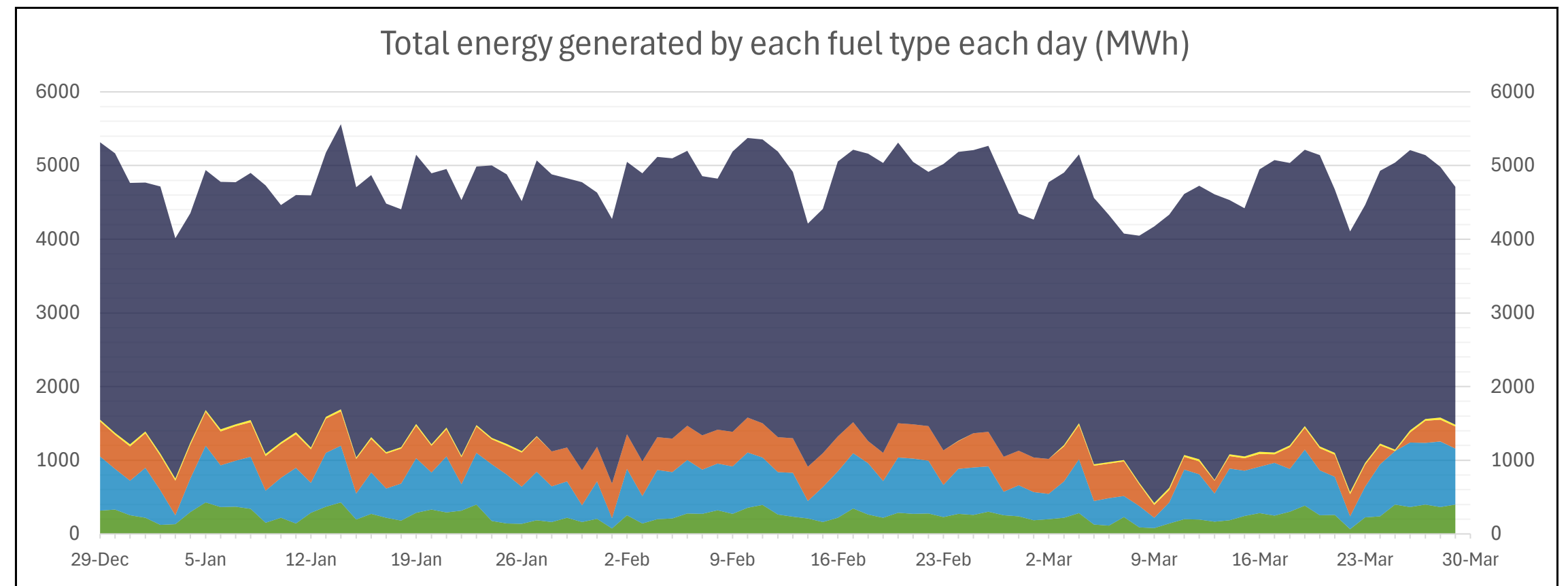
Other Sources: 8.5%

Minimum Gross Demand:	128.4 MW @ 2:00, 23 Mar
Maximum Gross Demand:	293.9 MW @ 14:00, 14 Jan
Minimum Net Demand:	112.3 MW @ 11:00, 11 Jan
Maximum Net Demand:	255.7 MW @ 18:00, 14 Jan
Maximum Renewable Power:	159.9 MW @ 12:00, 28 Mar



Total Overall (Quarter)		
Fuel	MWh	Percent
Fossil Fuel	327,986	74.7%
Biomass	1,351	0.3%
Steam	36,048	8.2%
Distributed PV	50,986	11.6%
Utility PV	22,561	5.1%

Best Hour:		
63.4%	at	12:00, 29 Mar
Fuel	MWh	Percent
Fossil Fuel	76.8	31.1%
Biomass	1.1	0.4%
Steam	12.3	5.0%
Distributed PV	112.3	45.5%
Utility PV	44.3	17.9%



Best Week:		
22.1%	for	23 Mar - 29 Mar
Fuel	MWh	Percent
Fossil Fuel	25,115	72.8%
Biomass	174	0.5%
Steam	1,585	4.6%
Distributed PV	5,220	15.1%
Utility PV	2,384	6.9%

Definitions:
For definitions and other information, please visit the NTESMO website:

[Data | NTESMO](#)

Disclaimer:
This report is for informational purposes only and is subject to the accuracy of the source data.

Hourly values, including maximums and minimums, are based on the average for the following hour. As such, the inter-hourly values may be higher or lower, respectively.

Data sources:
Fossil Fuel, Biomass, Steam, Utility PV:
PWC PI Historian
Distributed PV:
3rd party estimated actuals