

Northern Territory Renewables Report: 29 Dec 2025 - 29 Mar 2026

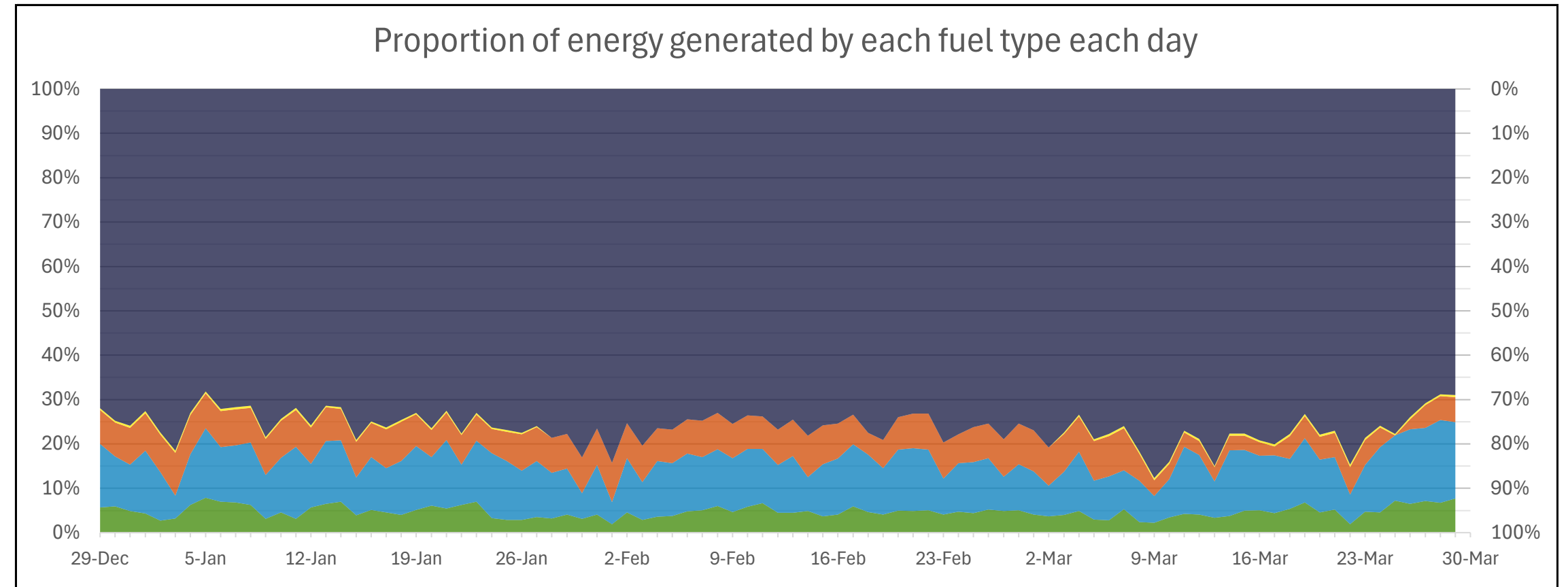
Renewable
Penetration:

16.6%

Fossil Fuels: 76.2%

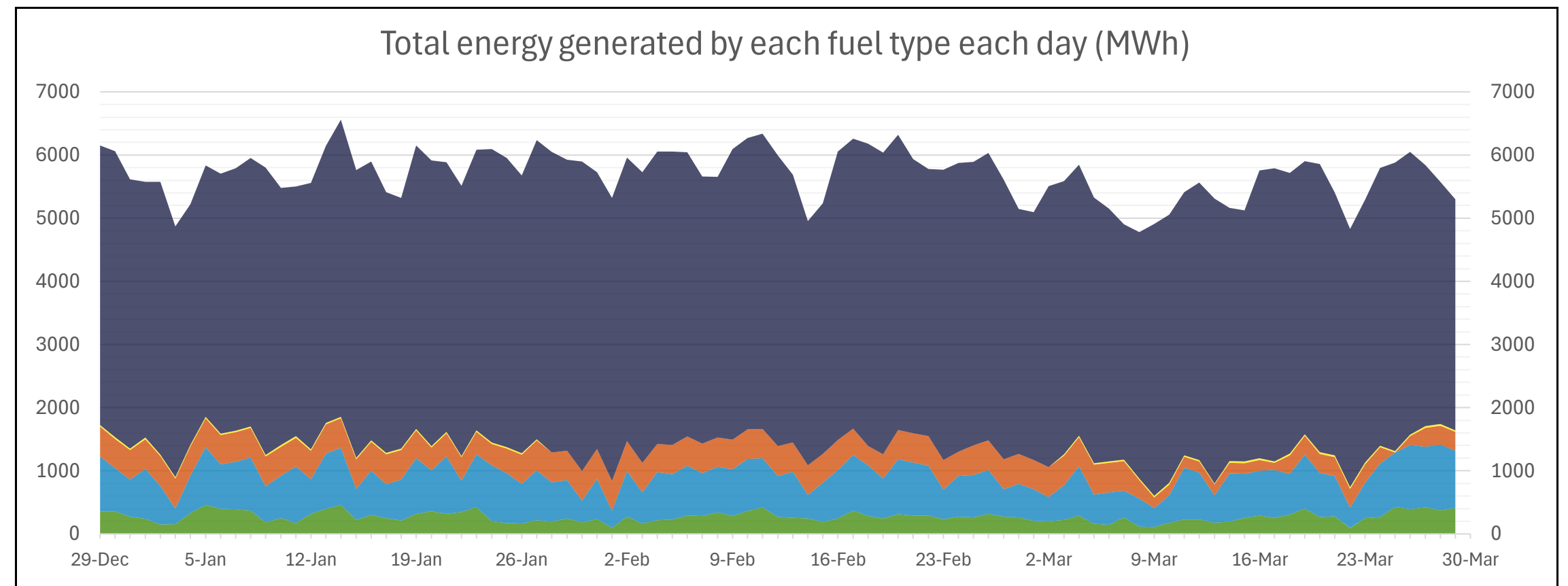
Other Sources: 7.2%

Minimum Gross Demand:	149.4 MW @ 3:00, 9 Mar
Maximum Gross Demand:	353.3 MW @ 13:00, 27 Jan
Minimum Net Demand:	135.5 MW @ 10:00, 11 Jan
Maximum Net Demand:	305.4 MW @ 18:00, 14 Jan
Maximum Renewable Power:	181.0 MW @ 12:00, 27 Mar



Total Overall (Quarter)		
Fuel	MWh	Percent
Fossil Fuel	395,123	76.2%
Biomass	1,351	0.3%
Steam	36,048	7.0%
Distributed PV	61,489	11.9%
Utility PV	24,585	4.7%

Best Hour:		
63.6%	at	12:00, 29 Mar
Fuel	MWh	Percent
Fossil Fuel	88.1	31.6%
Biomass	1.1	0.4%
Steam	12.3	4.4%
Distributed PV	132.8	47.7%
Utility PV	44.3	15.9%



Best Week:		
22.0%	for	23 Mar - 29 Mar
Fuel	MWh	Percent
Fossil Fuel	29,238	73.6%
Biomass	174	0.4%
Steam	1,585	4.0%
Distributed PV	6,210	15.6%
Utility PV	2,531	6.4%

Definitions:
For definitions and other information, please visit the NTESMO website:

[Data | NTESMO](#)

Disclaimer:
This report is for informational purposes only and is subject to the accuracy of the source data.

Hourly values, including maximums and minimums, are based on the average for the following hour. As such, the inter-hourly values may be higher or lower, respectively.

Data sources:
Fossil Fuel, Biomass, Steam, Utility PV:
PWC PI Historian
Distributed PV:
3rd party estimated actuals